

# SC FC ST DIN D4

## SENKO Connector and Adapter Series

SENKO Offers **3 Product Grades** to Meet Customer Needs

### PREMIUM 1 PC Connector Series



#### Pre-assembled 1pc Type Connector

This premium connector is available in SC, FC, ST, DIN and D4. This connector was designed to meet the highest requirements in the market.

The premium SC and FC Connector is designed to meet and exceed the Verizon FOC TPR requirement, for the OSP application, or for anywhere customers need a high quality product. Premium SM and Premium Low Loss SM (LS) are available. Typical IL of 0.05 for LS SM Ferrule, and 0.08 for Premium UPC. Various option for boots are available.

### STANDARD 1 PC Connector Series



#### Pre-assembled 1pc Connector

This connector series (SC, FC, and ST) gives value for cost. Using high quality components, these connectors meet IEC, and the general requirement of GR-326.

The same crimp and boot can be interchanged for all the Standard Connector Series (SC, FC, ST).

### CONNECTOR KIT Multi-Piece Connector



#### Multi-Piece Connector Kit

*(Ferrule to be Purchased Separately)*

Manufactured to the original NTT designed SC Connector kit, it is supplied as a multi-piece unassembled connector. Using high quality components, this connector meets IEC, and the general requirement of GR-326.

Ferrule with Flange are to be ordered separately.

#### FEATURES COMPARISON CHART

For SC Premium and SC Standard	PREMIUM LS CONNECTOR	PREMIUM SM CONNECTOR	STANDARD CONNECTOR	CONNECTOR KIT
IL Average Against Master (UPC)	0.05	0.08	0.12	***
IL Mean Value Random Mating (UPC)	0.07	0.12	0.25	***
Verizon FOC TPR-9409	○	○		
GR-326 Core Issue 4	○	○	△	
IEC, TIA/EIA JIS Spec	○	○	○	○
IEC Random Mating Grade A*	○			***
IEC Random Mating Grade B*	○	○		***
IEC Random Mating Grade C*	○	○	○	***
RoHS Compliant	○	○	○	○
UL 94V-0	○	○	○	○
4 Position Tuning After Assembly (SC, FC)**	○	○		
MINI Boots	○	○		
Standard Boots	○	○	○	
Long Boots	○	○		○
Premium Crimp Ring	○	○		
Standard Crimp Ring			○	
Pre-assembled 1pc Body	○	○	○	
Push Pull Mechanism	○	○	○	○
Free Floating Ferrule	○	○	○	○
Metal Back Post	○	○	○	○
Premium Duplex Clip	○	○		
Standard Duplex Clip			○	○
Crimp Tool CRT-401	○	○	○	CRT-501

Note: \*Based on IEC 61753-1 \*\*Only for UPC Connector \*\*\*Depend on ferrule selected

## TECHNICAL SPECIFICATIONS Premium and Standard Connector

PRODUCT SERIES	TYPE OF CONNECTOR SENKO P/N	IL AGAINST MASTER (dB)		IL RANDOM MATING (dB)	
		Average IL	Maximum IL	Mean IL	Maximum IL
Premium Low Loss SM	SC (254-199-xxx), FC (351-109-xx), (215-109-xx)	0.05	0.15	0.07	0.15 <sup>*1</sup>
Premium SM	SC (254-193-xxx), FC (351-103-xx), ST (215-103-xx)	0.08	0.20	0.12	0.25 <sup>*2</sup>
Premium Low Loss APC	SC APC (291/294-199-xx), FC APC (292/293-209-xx)	0.07	0.15	0.09	0.20
Premium APC	SC APC (291/294-193-xx), FC APC (292/293-203-xx)	0.10	0.25	0.14	0.30
Premium MM Connector	SC (254-291-xxx), FC (351-201-xx), ST (215-201-xx)	0.10	0.20	-	-
Standard SM	SC (231-191-xxx), FC (341-101-xx), (233-101-xx)	0.12	0.30	0.25	0.50 <sup>*3</sup>
Standard MM	SC (231-291-xxx), FC (341-201-xx), (233-201-xx)	0.15	0.30	-	-
	<b>Singlemode</b>	<b>Multimode</b>			
Operating Temperature	-40°C to +75°C	-40°C to +75°C			
Durability	<0.1dB typical change, 500 matings*	<0.1dB typical change, 500 matings*			

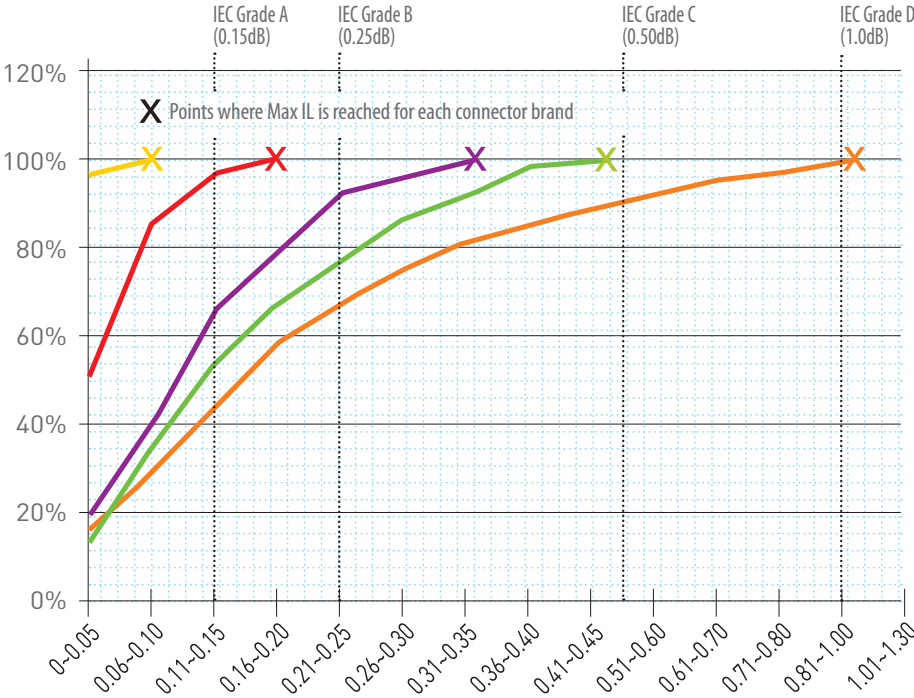
IEC Random mating test IEC 61753-1  
 1 - To meet IEC Random Mating Grade A ( $\leq 0.07$ dB mean,  $\leq 0.15$ dB max for >97% of sample).  
 Grade A Spec is not finalized, above is a recommendation  
 2 - To meet IEC Random Mating Grade B ( $\leq 0.12$ dB mean,  $\leq 0.25$ dB max for >97% of sample)  
 3 - To meet IEC Random Mating Grade C ( $\leq 0.25$ dB mean,  $\leq 0.50$ dB max for >97% of sample)

## Random Mating IL

SENKO has categorized its connectors to reflect the IEC Random Mating specified grades A\*, B, and C, allowing the end-user to make an informed decision when selecting connectors, of how finished patchcords using SENKO connectors will perform.

### Random mating Insertion Loss

- SENKO Low Loss
- SENKO Premium
- SENKO Standard
- High quality Competitor
- Low quality Competitor



1 PC Connector (254 Series)

SC UPC PREMIUM



900µm MINI Boot



2.0mm MINI Boot



3.0mm MINI Boot

CONNECTOR	FERRULE TYPE	HOUSING	BOOT TYPE	BOOT COLOR
254 Premium	193 SM: Premium 125µm	5 Aqua	7 Long 3.0mm	1 Blue
	199 SM: Low Loss 125µm	6 Blue	A Long 2.0mm	2 Black
	291 MM: Premium 127µm	7 Black	M Standard 900µm	3 Green
		8 Red	N Standard 2.0mm	4 Red
		9 Beige	P Standard 3.0mm	6 Yellow
			J MINI 900µm	7 White
			K MINI 2.0mm	8 Beige
			L MINI 3.0mm	9 Aqua
			F Flex Angle Boot 3.0mm	
			G Flex Angle Boot 2.0mm	

254 - 193 - 6F1 ORDER CODE example

**Note:** Other ferrule ID size are available  
SM 81µm SM 126µm SM 125.5µm MM 230µm MM 144µm

**Features:**

- SENKO's flagship Premium Connector series
- Designed to exceed the requirement of Verizon FOC TPR 9409 requirements
- Premium Low Loss SM, typical IL against Master 0.05dB
- Premium Low Loss SM to meet IEC 61753-1 Grade A random mating requirement of Max 0.15dB
- Premium SM typical IL against Master 0.08dB
- Premium SM to meet IEC 61753-1 Grade B random mating requirement of Max 0.25dB
- 4 direction tuning feature to improve random mating IL
- Crimp tool to be used CRT-401

1 PC Connector (291/294 Series)

SC APC PREMIUM



900µm MINI Boot



2.0mm MINI Boot



3.0mm MINI Boot

CONNECTOR	FERRULE TYPE	POLISH	BOOT TYPE
291 Premium Step	193 SM: Premium 125µm	1 No Angle	7 Long 3.0mm
294 Premium Cone	199 SM: Low Loss 125µm	2 8° Pre-Angle	A Long 2.0mm
			M Standard 900µm
			N Standard 2.0mm
			P Standard 3.0mm
			J MINI 900µm
			K MINI 2.0mm
			L MINI 3.0mm
			F Flex Angle Boot 3.0mm
			G Flex Angle Boot 2.0mm

291 - 193 - 1F ORDER CODE example

**Note:** Other ferrule ID size are available  
SM 81µm SM 126µm SM 125.5µm

**Features:**

- SENKO's flagship Premium Connector series
- Designed to exceed the requirement of Verizon FOC TPR 9409 requirement
- Premium Low Loss SM, typical IL against Master 0.07dB
- Premium SM typical IL against Master 0.08dB
- Cone Ferrule type and Step Ferrule type available
- Option of an 8 degree pre-angle cut available
- Crimp tool to be used CRT-401



## SC UPC STANDARD

### 1 PC Connector (231 Series)

CONNECTOR		FERRULE TYPE	HOUSING	BOOT TYPE	BOOT COLOR				
231	Standard	191	SM: Standard 125.5µm	5	Aqua	P	Standard 3.0mm	1	Blue
		291	MM: Standard 127µm	6	Blue	N	Standard 2.0mm	2	Black
				7	Black	M	Standard 900µm	4	Red
				8	Red	J	MINI 900µm	6	Yellow
				9	Beige			8	Beige

231 - 191 - 7N4 ORDER CODE example

#### Features:

- Pre-assembled one piece design to reduce assembly time
- Meets and exceeds the TIA/EIA, IEC and JIS SC Specification
- Typical IL against master to be 0.12dB Max 0.3dB
- Crimp tool to be used CRT-401



## SC CONNECTOR KIT

### NTT Kit Style (132 Series)

CODE	OUTER HOUSING	BOOT TYPE	BOOT COLOR			
132	A11	Blue with White Line	7	3.0mm Cable Long	1	Blue
	B11	Black with White Line	9	2.0mm Cable Long	2	Black
	C11	Beige with White Line	D	900µm MINI Fiber Boot	3	Green
	D11	Green with White Line			4	Red
					8	Beige

132 - A11 - 71 ORDER CODE example

#### Features:

- The original NTT Style Connector Kit design (*Multi Piece Connector*)
- Meets and exceeds the TIA/EIA, IEC and JIS SC Specification
- Various housing and boot color to meet customer need.
- Ferrule to be ordered separately
- Crimp tool to be used CRT-501



## SC DUPLEX CLIP

CLIP	CLIP COLOR		
224	SC Duplex Clip for Premium Connector	591	Black
274	SC Duplex Clip for Standard & Connector Kit	592	Green
		593	Blue
		594	Beige
		595	Red
		596	Aqua

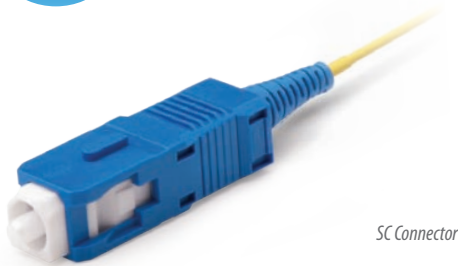
224 - 591 ORDER CODE example





## SC CONNECTOR 1.2

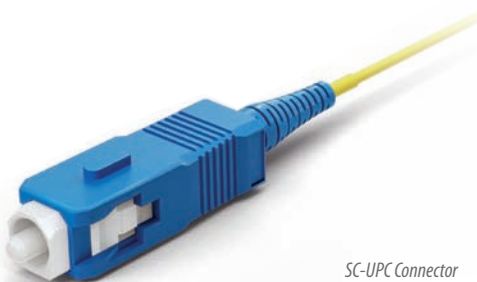
The new SC Connector is as strong as a 3mm cable. Reduce your cable size, but keep the strength. The SC Connector for 1.2mm cable is fully compliant to GR-326-Core for Media 1.



SC Connector

CONNECTOR	FERRULE SIZE	HOUSING COLOR	BOOT SIZE	BOOT COLOR
556 SC Premium 1.2mm Assembled	193 Premium SM	4 Violet (OM4)	R 1.2mm	1 Blue
557 SC Premium 1.2mm Un-Assembled	291 MM 127µm	5 Aqua (OM3)		7 White
		6 Blue		
		7 Black		
		8 Red		
		9 Beige		

556 - 193 - 4R7 ORDER CODE example



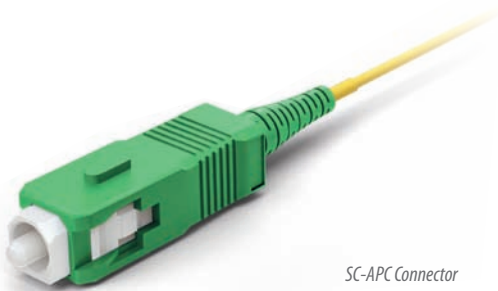
SC-UPC Connector

CONNECTOR	FERRULE SIZE	FERRULE POLISH	BOOT SIZE
596 SC APC Step 1.2mm Assembled	193 Premium SM	1 No angle	R 1.2mm
597 SC APC Step Premium 1.2mm Un-Assembled		2 Pre-angle	
598 SC APC Cone Premium 1.2mm Assembled			
599 SC APC Cone Premium 1.2mm Un-Assembled			

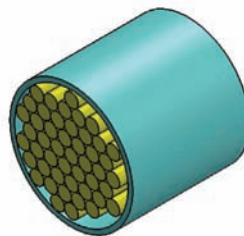
596 - 193 - IR ORDER CODE example

### Features:

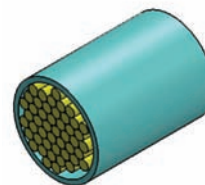
- Meets the same GR-326 mechanical requirements as a conventional 3mm and 2mm cable
- Exceeds 15lb Proof Test Objective as per GR-326-Core section 1.4.4.3.4
- Passes the GR-326 TWAL Test for Media 1 (ruggedized cable) as per section 4.4.3.5
- Reduces cable congestion without sacrificing mechanical strength



SC-APC Connector



Duct containing 48 x Ø 3mm cable



Duct containing 48 x Ø 2mm cable



Duct containing 48 x Ø 1.2mm cable

Note: Duct size reduced by 1/6 (approx 16%) compared to a 3mm cable

# SC CONNECTOR 4.8

SPECIFICATION	SINGLEMODE	MULTIMODE
<b>For SC Connector 4.8</b>	<b>Typical</b>	<b>Typical</b>
<b>Insertion Loss</b>	<b>Premium Connector UPC</b>	0.08dB
	<b>Premium Connector APC</b>	0.10dB
<b>Return Loss</b>	≥ 55dB typical (PC) ≥ 68dB typical (APC)	
<b>Durability</b>	< 0.1dB change, 500 matings	
<b>Operating Temperature</b>	-40 to +75°C	

*Note: Specifications shown above were obtained using SENKO recommended products and procedures.*



4.8mm APC Connector



4.8mm UPC Connector



4.8mm MM Connector

CONNECTOR	FERRULE TYPE	HOUSING	BOOT TYPE	BOOT COLOR
554 SC Premium PC	193 SM: Premium 125µm	6 Blue	1 4.8mm Boot	1 Blue
	199 SM: Low Loss 125µm	8 Beige		8 Beige
	291 MM: 127µm			

554 - 193 - 611 ORDER CODE example

**Note:** Other ferrule ID size are available  
 SM 81µm SM 126µm SM 125.5µm

CONNECTOR	FERRULE TYPE	POLISH	BOOT TYPE
591 SC Premium APC Step	193 SM: Premium 125µm	1 No Angle	1 4.8mm Boot
594 SC Premium APC Cone	199 SM: Low Loss 125µm	2 8° Pre-Angle	

591 - 193 - 11 ORDER CODE example

**Note:** Other ferrule ID size are available  
 SM 81µm SM 126µm SM 125.5µm

### Features:

- Compliance with Telcordia, TIA/IEA, IEC and JIS interface specifications
- Low insertion loss & back reflection\*
- One-piece construction & pull-proof design
- Free-floating ceramic ferrule
- Precision anti-rotation key and corrosion resistant body
- UL-rated plastic housing and boots in a variety of colors
- Telcordia style boots
- Adapters with choice of metal or plastic housing, mount styles & flange options

# SC CRIMP TOOL

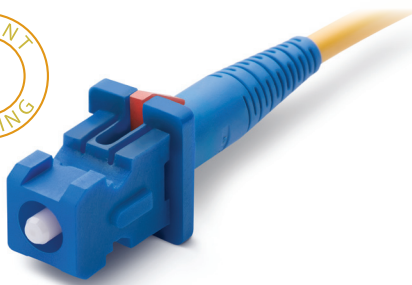
CODE	CONNECTOR TYPE
CRT	401 SC, FC, ST One Piece Connectors
	501 SC Connector Kit 132 series
	705 SC/LC 1.2mm Connector

CRT - 401 ORDER CODE example

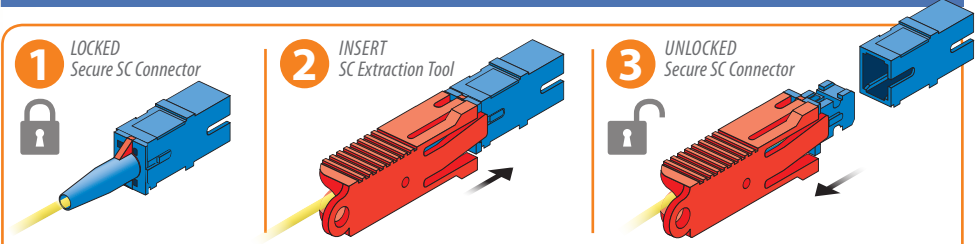




Locking Connector



SC SECURE



Allows user to plug into any Conventional SC adaptor but requires extraction tool for removal

SENKO's patent pending Secure SC connectivity solution is designed to prevent unauthorized or inadvertent changes to cabling networks in highly sensitive applications such as data centers, telecom rooms, enterprise networks including financial, educational, secure IT and military networks, where multiple physical layer access classifications are critical. SENKO's unique 'tamper proof' Secure SC connectivity solution is compatible and can be fitted to any industry-standard SC ports in active network equipment, patch panels and customer premise equipment.

OPTICAL SPECIFICATION AND CONNECTOR OPTIONS

<b>Insertion Loss</b>	0.1dB Typical for SM UPC, SM APC, MM PC
<b>Return Loss</b>	55dB for SM UPC, 65dB for SM APC
<b>Lock Key Options</b>	4 Key configuration in 4 colors Red, Yellow, Black and White
<b>Boot / Cable Option</b>	3mm, 2mm boot Flex angle boot also available
<b>Operating Temperature</b>	-40°C to +75°C
<b>Mechanical Requirement</b>	To meet and exceed GR-326 Core Issue 4

Features:

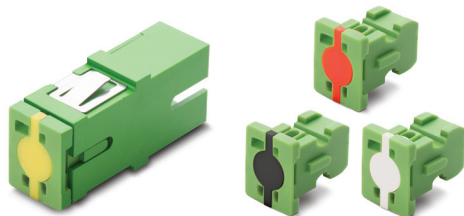
- True locked keyed connector security
- Multiple key configurations of access control and tamper-proofing
- Compatible with all industry standard passive and active SC ports
- Industry standard color coding of housings for easy identification and administration of SM and MM Port
- Blockers available for 'protecting' unused ports

CODE	KEY TYPE	FERRULE SIZE	HOUSING	BOOT TYPE	BOOT COLOR
581 Secure SC UPC	A Key Type A- Black	193 SM 125µm	6 Blue	K 2.0mm Mini Boot	1 Blue
	B Key Type B- White	199 Low Loss SM 125µm	9 Beige	L 3.0mm Mini Boot	2 Black
	C Key Type C- Yellow	291 MM 127µm			5 Red
	D Key Type D- Red				

CODE	KEY TYPE	FERRULE SIZE	FERRULE POLISHING	BOOT TYPE
582 Secure APC	A Key Type A- Black	193 SM 125µm	1 No Angle	K 2.0mm Mini Boot
	B Key Type B- White	199 Low Loss SM 125µm	2 8° Pre-Angle	L 3.0mm Mini Boot
Green Cone	C Key Type C- Yellow			
	D Key Type D- Red			

582A - 193 - 2K ORDER CODE example

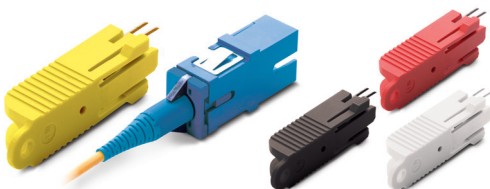
SECURE-SC PORT BLOCKER



CODE	KEY TYPE	HOUSING
SK-PBK Secure SC Port Blocker	A Key Type A- Black	G Green
	B Key type B- White	B Blue
	C Key Type C- Yellow	T Beige
	D Key Type D- Red	

SK-PBK - A - G ORDER CODE example

SECURE-SC KEYED EXTRACTION TOOL

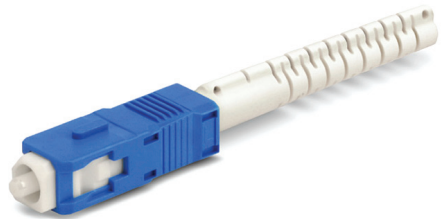


EXTRACT KEY	COLOR CODE	HOUSING
SK-KEY Secure SC Port Blocker	A Key Type A- Black	(None) Standard Type
	B Key type B- White	1 Side Road Type
	C Key Type C- Yellow	
	D Key Type D- Red	

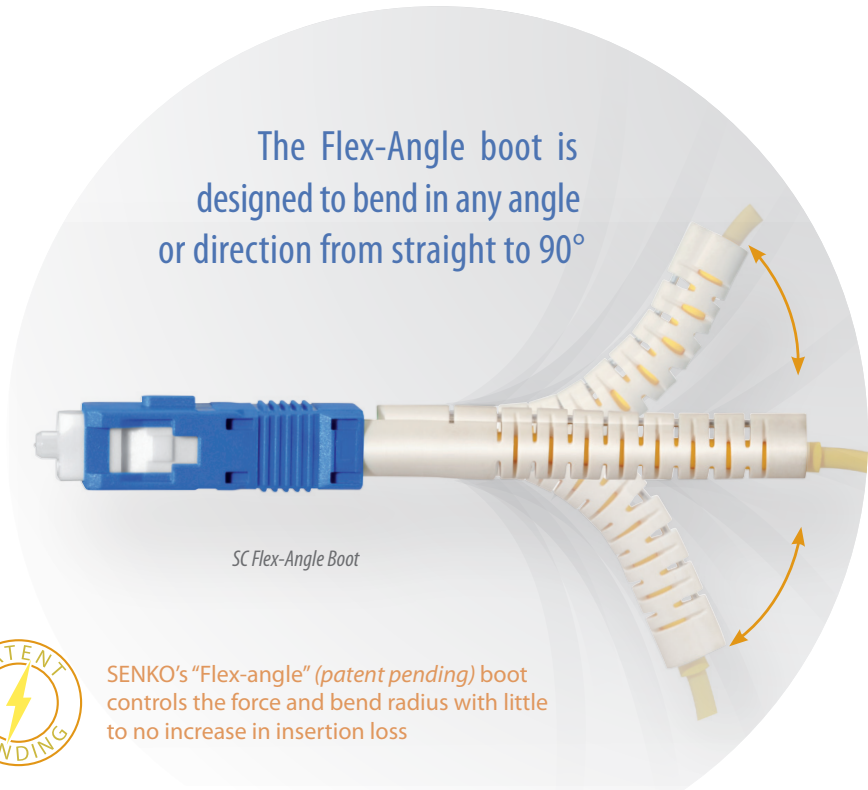
SK - KEY - A ORDER CODE example

**SC FLEX ANGLE BOOT**

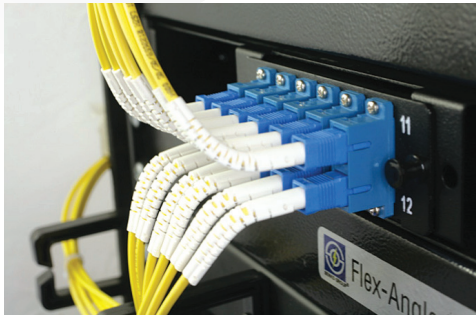
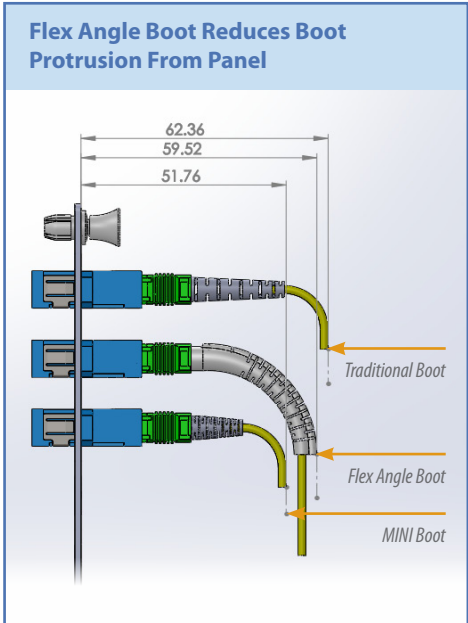
SENKO's new 2.0mm and 3.0mm boot addition for the Premium SC connectors. The Flex-Angle boot is designed to bend and maintain any angle or direction from straight to 90°. The boot is molded over a single stainless steel wire and can be easily positioned by hand. The internal wire holds the boot at the desired angle or direction.



SC Flex-Angle Boot



SENKO's "Flex-angle" (patent pending) boot controls the force and bend radius with little to no increase in insertion loss



PRODUCT SERIES	BOOT	TYPE OF CONNECTOR
Premium SC 2.0mm	HW-25001-xx	254-xxx-xGx
Premium SC 3.0mm	HW-25002-xx	254-xxx-xFx
Standard SC 2.0mm	HW-25001-xx	231-xxx-xGx
Standard SC 3.0mm	HW-25002-xx	231-xxx-xFx



TOP (True One Piece) Adapter 243/248 series

SC TOP SIMPLEX ADAPTER



SC TOP Simplex Adapter



SC TOP Simplex Adapter without Flange

CODE	TYPE	COLOR	SLEEVE TYPE	HOOK MATERIAL	SHUTTER
243 Flange	1 Simplex	0 Blue	1 Zirconia	1 High Tg	N No Shutter
248 No Flange		1 Green	2 Metal		
		2 Beige			
		3 Black			
		9 Aqua			

243 - 101 - 1N ORDER CODE example

**Note:** 1. Custom colors available upon request  
2. High TG Hook meets GR326 TG100 requirements



SC One Piece Adapter, No Weld Type



SC Standard Adapter, Welded Type

The new patented one piece housing design prevents breakage of the adapter due to the absence of ultrasonic weld type construction.

TOP (True One Piece) Adapter 243/248 series

SC TOP DUPLEX ADAPTER



SC TOP Duplex Adapter



SC TOP Duplex Adapter without Flange

CODE	TYPE	COLOR	SLEEVE TYPE	HOOK MATERIAL	SHUTTER
243 Flange	2 Duplex	0 Blue	1 Zirconia	1 High Tg	N No Shutter
248 No Flange		1 Green	2 Metal		
		2 Beige			
		3 Black			
		9 Aqua			

243 - 201 - 1N ORDER CODE example

**Features:**

- One piece solid body, no welding point (patent pending)
- Built in panel mounting plate
- Rattle free wings to support tight fit in the panel (patent pending)
- Inner shutter and Outer shutter ready for eye safety
- Flange type, and No flange type available

## SC TOP ADAPTER WITH SHUTTER

CODE	TYPE	COLOR	SLEEVE TYPE	HOOK MATERIAL	SHUTTER	
243	Flange	1 Simplex	0 Blue	1 Zirconia	1 High Tg	A Internal Shutter (w/o mark)
248	No Flange	2 Duplex Horizontal	1 Green	2 Metal		C Internal Shutter (w/mark)
		2 Beige				
		3 Black				
		9 Aqua				

248 - 121 - 1C ORDER CODE example

CODE	DESCRIPTION
222-2-0S	External Shutter for SC Adapter (Outer Shutter Only)

222 - 2 - 0S ORDER CODE example

**Note:** Works with: P/N 243/248 pg.10

### SC Adapter with Shutter (Internal and External)

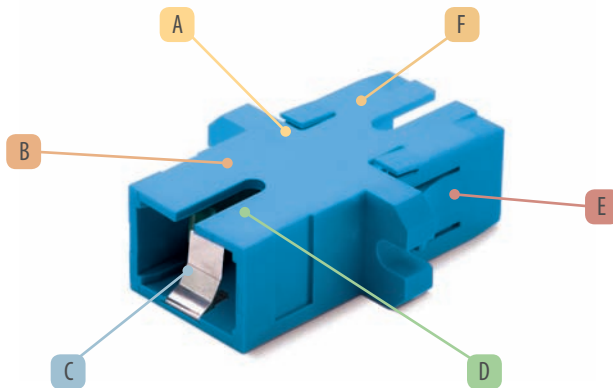


SC TOP Adapter with Internal Shutter



SC Simplex with Flange and External Shutter

## SC TOP ADAPTER FEATURES



### Features:

- Four (4) Anti-Rattle “wings” prevent the freedom of the adapter to wiggle in a top-to-bottom direction when snapped into adapter panels
- An integrated panel clip is molded into the adapter’s plastic housing which eliminates the need for any added metallic panel clip
- The integral panel clips have the dual role of also preventing the adapter to wiggle in a side-to-side direction
- Recesses on both sides of the adapter allow the current external shutter to be used

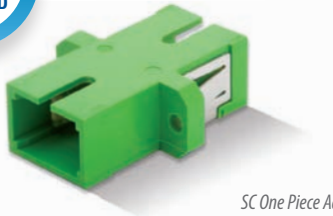
- A** Rattle Free Wings
- B** One Piece Solid Body
- C** Shutter Ready
- D** High TG Hook meets GR326 TG100 requirements
- E** Integrated Mount Clip
- F** Anti Fungus Plastic UL 94V-0

Premium Adapter 242/247 series

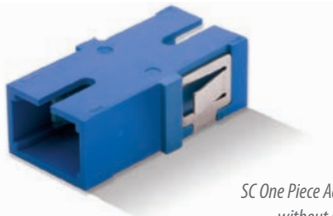
# SC PREMIUM ONE PIECE SIMPLEX ADAPTER



The SENKO patented design, one piece adapter is stronger than the conventional, seam-welded SC adapter giving improved side loading strength and the preventing adapter breakage. SC Simplex adapters have been tested to the Verizon FOC TPR 9409 standard and sleeves used in this adapter have been tested and passed the TRP requirements. High TG hooks are used to meet the GR-326 requirements. Shuttered versions are also available.



SC One Piece Adapter



SC One Piece Adapter without Flange

ADAPTER SPECIFICATION	ZIRCONIA SLEEVE		METAL SLEEVE	
	Typical	Max	Typical	Max
For SC, FC and ST Adapters				
Insertion Loss	0.05	0.20	0.10	0.30
Sleeve / Ferrule Withdraw Force	200gf - 600gf			
Operating Temperature	-40° to +75°			
Durability	<0.1dB typical change, 500 matings*			

*Note: Zirconia tested with SMF Fiber, metal sleeve tested with MMF*

CODE	TYPE	COLOR	SLEEVE TYPE	HOOK MATERIAL	SHUTTER
242 Flange	1 Simplex	0 Blue	1 Zirconia	1 High Tg	N No Shutter
247 No Flange		1 Green	2 Metal		
		2 Beige			
		3 Black			
		9 Aqua			

247 - 101 - 1N ORDER CODE example

**Note:** Custom colors available upon request

**Features:**

- SENKO's highest quality adapter series
- Patented one piece housing design prevents housing breakage
- Designed to exceed the requirement of the Verizon FOC TPR 9409 requirement
- High TG hook prevents unwanted hook opening in OSP application
- Typical insertion loss under 0.05dB and Max IL of 0.20dB
- Various housing color to meet customer's requirement
- Shutter option ready for eye safety

Premium Adapter 242/247 series

# SC PREMIUM ONE PIECE DUPLEX ADAPTER



SC Duplex with Flange



SC One Piece Adapter, No Weld Type

CODE	TYPE	COLOR	SLEEVE TYPE	HOOK MATERIAL	SHUTTER
242 Flange	2 Duplex	0 Blue	1 Zirconia	1 High Tg	N No Shutter
247 No Flange		1 Green	2 Metal		
		2 Beige			
		3 Black			
		9 Aqua			

247 - 202 - 1N ORDER CODE example

**Note:** Custom colors available upon request



SC One Piece Adapter, No Weld Type



Conventional Adapter Welded type

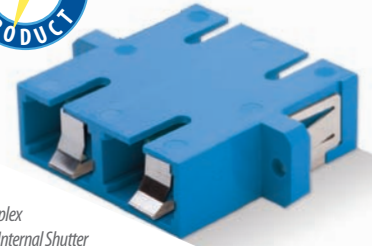
The new one piece housing design prevents breaking of the adapter due to the absence of ultrasonic weld type construction.

## SC PREMIUM ONE PIECE ADAPTER WITH SHUTTER

CODE	TYPE	COLOR	SLEEVE TYPE	HOOK MATERIAL	SHUTTER
242	Flange	1 Blue	1 Zirconia	1 High Tg	A Internal Shutter (w/o mark)
247	No Flange	2 Beige	2 Metal		C Internal Shutter (w/mark)
		3 Black			
		9 Aqua			

242 - 121 - 1C ORDER CODE example

### Internal Shutter



SC Duplex with Internal Shutter



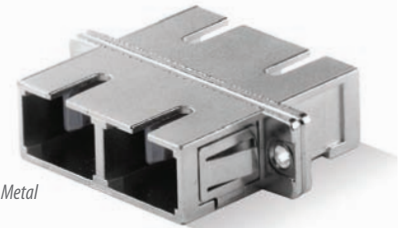
SC Simplex without Flange and Internal Shutter

## SC METAL ADAPTER

TYPE	SLEEVE TYPE	HOOK MATERIAL
226 Simplex	101 Zirconia	1 Hi-Tg
228 Duplex	102 Metal	

226 - 101 - 1 ORDER CODE example

SC Simplex Metal Adapter



SC Duplex Metal Adapter

## SC SIMPLIFIED CONNECTOR AND ADAPTER

CONNECTOR CODE	FERRULE TYPE	BOOT TYPE	BOOT COLOR
774 SC Simplified Connector	191 SM: 125.5µm	2 1.0mm Fiber	2 Black

774 - 191 - 22 ORDER CODE example



ADAPTER CODE	TYPE	SLEEVE	HOUSING COLOR
229 SC Simplified Adapter	1 Simplex	1 Zirconia Straight Split	1 Blue
	2 Duplex	2 Metal Straight Split	
	3 8 Ways		
	4 10 Ways		

229 - 111 ORDER CODE example